

Brand new luxury 5 bedroom chalet for sale in Serre Chevalier with garden and large garage.

EXCLUSIVE

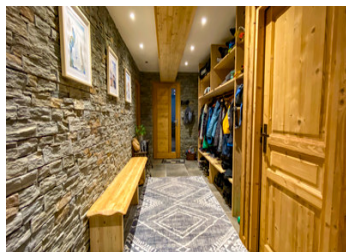


INFORMATION

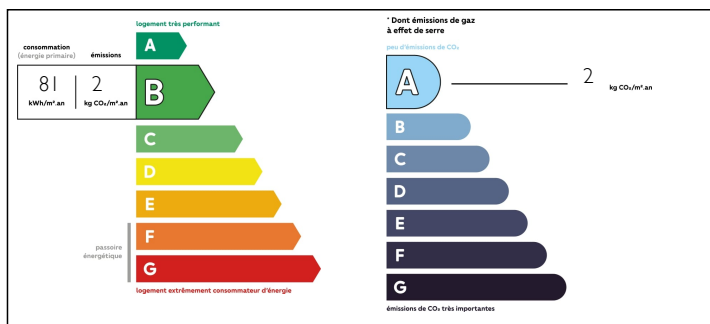
Town:	Briançon
Department:	Hautes-Alpes
Bed:	5
Bath:	4
Floor:	350 m2
Plot Size:	1 100 m2

IN BRIEF

Stunning contemporary alpine property for sale. SEE VIDEO IN IMAGES BELOW.

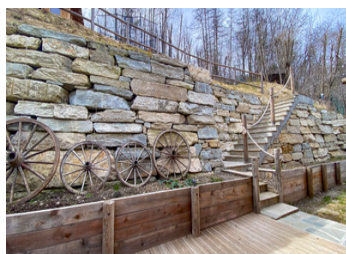


ENERGY - DPE



NB. Quoted prices relate to euro transactions. Fluctuations in exchange rates are not the responsibility of the agency or those representing it. The agency and its representatives are not authorised to make or give guarantees relating to the property. These particulars do not form part of any contract but are to be taken as a general representation of the property. Any areas, measurements or distances are approximate. Text, photographs and plans, where applicable, are for guidance only. Leggett and its representatives have not tested services, equipment or facilities and cannot guarantee the same.

Particulars for off-plan purchases are intended as a guide only. Final finishes to the property may vary. Purchasers are advised to engage a solicitor to check the plans and specifications as laid out in their purchase contract with the developer.



NOTES

DESCRIPTION

The Chalet...

This recently finished property has just come on the market after having been built to a very high specification. It has been built with quality materials and includes luxury fixtures and fittings.

The property is located in a residential area in between Briancon and Chantemerle, and it is even possible to ski to the back door in favourable conditions.

It has 350 m2 of habitable space where one can enter the chalet either from the ground floor or from the vast terrace on the 1st floor.

On the lower floor there is an integral 60 m garage, which gives access to the lower level. On this floor there's a large office, a games room and a guest bedroom / gym with shower room. There is also a service room which includes laundry and storage.

Upstairs we have a vast living area composed of completely fitted high tech kitchen, dining area and cosy lounge, all modelled around the central fire place which rises up to the second floor.

There's another charming guest room with bathroom and a separate w.c. On this level we have a relaxing spa room with shower, jacuzzi and sauna. A wall mounted TV completes the room.

From the kitchen we can access the rear of the chalet and the stone summer house, barbeque and natural water source. The rear of the property has been beautifully terraced and rises up to a kids cabin and trampoline.

On the upper...