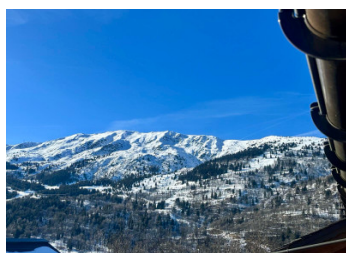
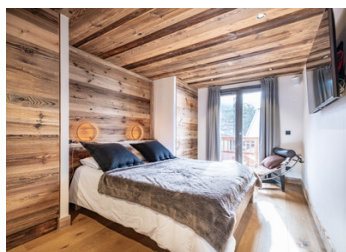


Incredible Chalet apartment close to one of the most sought after ski areas in the Méribel Valley.

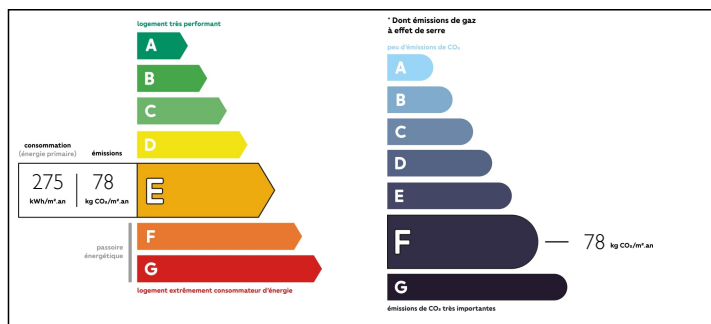


## INFORMATION

Town:	Les Allues
Department:	Savoie
Bed:	3
Bath:	3
Floor:	124.21 m2
Outside Space:	20 m2



## ENERGY - DPE



## IN BRIEF

An absolutely stunning chalet-apartment located very close to Méribel Village, just a stone's throw away from the Ski Lift and Lapin piste, bakery, ski shop, supermarket and bar & restaurant "La Terrasse" which is open all year round. You will feel so at home in this cozy nest in a prized location. The property is set up perfectly for rental accommodation with its en-suite bedrooms and ample private parking, a rarity in Méribel.

NB. Quoted prices relate to euro transactions. Fluctuations in exchange rates are not the responsibility of the agency or those representing it. The agency and its representatives are not authorised to make or give guarantees relating to the property. These particulars do not form part of any contract but are to be taken as a general representation of the property. Any areas, measurements or distances are approximate. Text, photographs and plans, where applicable, are for guidance only. Leggett and its representatives have not tested services, equipment or facilities and cannot guarantee the same.

Particulars for off-plan purchases are intended as a guide only. Final finishes to the property may vary. Purchasers are advised to engage a solicitor to check the plans and specifications as laid out in their purchase contract with the developer.



## DESCRIPTION

Ground floor garage with laundry area and boiler room. Stairs lead to the first floor which has 3 ensuite bedrooms: 2 doubles and 1 large room with double bunkbeds and a mezzanine. The spacious corridor leads further up to the 2nd floor where the main entrance is found with private steps and then a large modern, fully equipped open kitchen and dining area opening on to a beautiful lounge with open fire place. The balcony reveals beautiful views to the South and South west.

-----

Co-owned building of 3 units  
Provisional annual charges: 700€

-----

Information about risks to which this property is exposed is available on the Géorisques website : <https://www.georisques.gouv.fr>

## NOTES