

Luxury ski chalet of 948m2 in Courchevel 1850 with large spa, pool, gym, cinema, bar, car lift & staff area

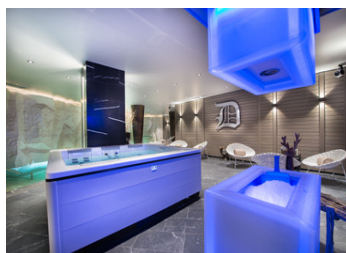
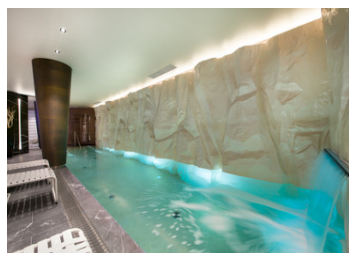


## INFORMATION

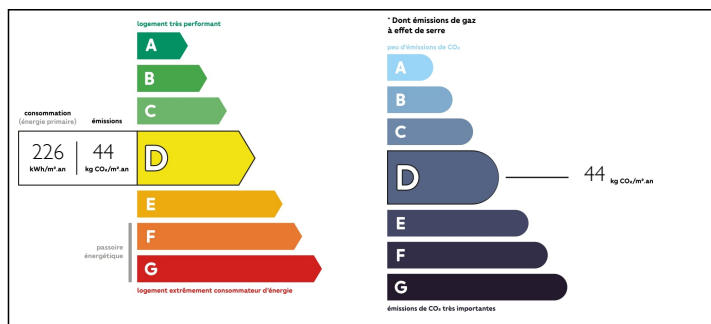
Town:	Courchevel
Department:	Savoie
Bed:	5
Bath:	5
Floor:	948 m2
Plot Size:	0 m2

## IN BRIEF

This luxury chalet of 948m2 total space, presents the new owner with an exquisite chalet close to the ski slopes, restaurants, bars and shops of Courchevel 1850. The chalet comprises: -5 ensuite bedrooms including dressing rooms, offices spaces and relaxation areas. -Open plan top floor living space with fantastic views and an open fire, plus bar area -Spa with swimming pool, jacuzzi, sauna, steam room, massage room and gymnasium -Cinema -Car lift with indoor and out door parking and storage -Professional kitchen, laundry and staff apartment -Wine cellar and Ski room Courchevel and the extended area of the 3 valleys is known for its exceptional skiing totalling 600kms of manicured pistes and untold off piste possibilities. Courchevel 1850 is a prestigious ski resort synonymous with luxury, quality and discretion.

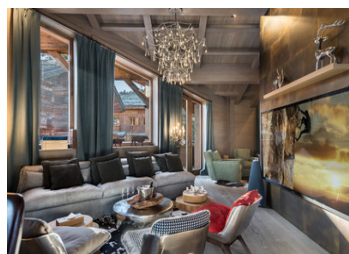


## ENERGY - DPE



NB. Quoted prices relate to euro transactions. Fluctuations in exchange rates are not the responsibility of the agency or those representing it. The agency and its representatives are not authorised to make or give guarantees relating to the property. These particulars do not form part of any contract but are to be taken as a general representation of the property. Any areas, measurements or distances are approximate. Text, photographs and plans, where applicable, are for guidance only. Leggett and its representatives have not tested services, equipment or facilities and cannot guarantee the same.

Particulars for off-plan purchases are intended as a guide only. Final finishes to the property may vary. Purchasers are advised to engage a solicitor to check the plans and specifications as laid out in their purchase contract with the developer.



## DESCRIPTION

This impressive, luxury chalet of a total size of 948m<sup>2</sup> is organised over 6 floors:

Level +2, open plan living and large dining area where an impressive enclosed fireplace and chimney create a division to a cozy bar area also used as a service kitchen as the food is delivered by a food lift from the professional kitchen.

Level +1, 1 ensuite double bedroom, 1 master suite with dressing and bathrooms

Level 0, 2 master suites with dressing and bathroom, hall and cloakroom

Level -1, Outdoor jacuzzi, entrance hall, 1 master suite with dressing and bathroom, ski room, WC and wine cellar and cloakroom as well as a fully equipped professional kitchen with the food lift.

Level-2, Fantastic swimming pool and large spa including sauna, steam room, jacuzzi, massage room, showers, changing room as well as a gymnasium. On this floor there is also a laundry and a staff apartment with sleeping for 3 and a kitchenette and dining area.

Level -3, A cinema and guest storage area as well as indoor parking via a car lift and plenty of general storage and technical areas.

This is a fantastic opportunity to acquire a very large chalet in the renowned resort of Courchevel 1850.

Information about risks to which this property is exposed is available on the Géorisques website : <https://www.georisques.gouv.fr>

## NOTES