

A 2 bedroom single storey house with attached 1 bedroom apartment to refresh with attached garden



INFORMATION

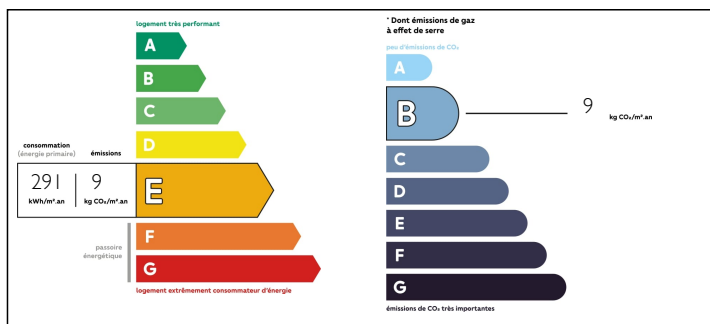
Town:	Lathus-Saint-Rémy
Department:	Vienne
Bed:	3
Bath:	2
Floor:	96 m2
Plot Size:	50 m2

IN BRIEF

Situated in this popular village in walking distance to all amenities this property has many possibilities - maybe a holiday home, maybe a home with a self contained apartment for guests / to rent or maybe just create one house for a family - the choice is yours

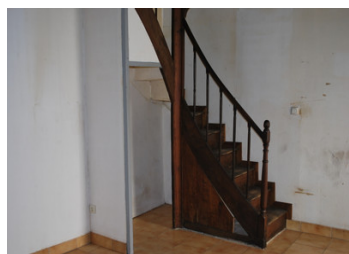


ENERGY - DPE



NB. Quoted prices relate to euro transactions. Fluctuations in exchange rates are not the responsibility of the agency or those representing it. The agency and its representatives are not authorised to make or give guarantees relating to the property. These particulars do not form part of any contract but are to be taken as a general representation of the property. Any areas, measurements or distances are approximate. Text, photographs and plans, where applicable, are for guidance only. Leggett and its representatives have not tested services, equipment or facilities and cannot guarantee the same.

Particulars for off-plan purchases are intended as a guide only. Final finishes to the property may vary. Purchasers are advised to engage a solicitor to check the plans and specifications as laid out in their purchase contract with the developer.



DESCRIPTION

Enter into the main house from the street into the

Garage - 5.5m x 4m with hot water tank - maybe this can be another room in the house to create more space

Door to living room / dining room with kitchen in the corner - wood burning stove - 8.2m x 3.6m

Door to bathroom

Door to Bedroom 1 2.9m x 4m

Door to Bedroom 2 2.9m x 4.1m

Door to garden and passage way down the side of the house

Attached to this house is the 2nd house

Door from street into a living room, dining room, kitchen 5m x 4.2m

Stairs to first floor

Bedroom 3.8m x 3.2m

Door to cupboard

Door to toilet

Door to shower room 1.8m x 1m

Heating - wood burner and electric radiators

Mains Drains

Attached on one side

Double glazing

The house is in need of some updating

The village of Lathus St Remy is very popular and has a convenience store, 2 bakers, tabac, hairdressers, wood yard, garage, florist, doctors, school, hardware store etc etc

Approx one hour from Poitiers and Limoges airports

Information about risks to which this property is exposed is available on the Géorisques website : <https://www.georisques.gouv.fr>

NOTES