

Gite complex offering luxury accomodation, conference centre, gym and heated indoor pool.

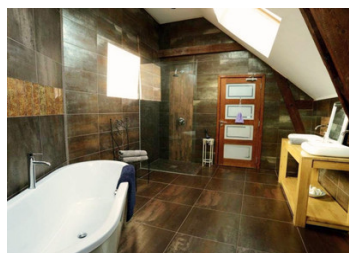
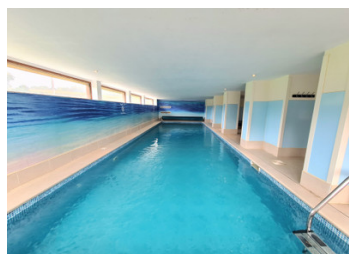


INFORMATION

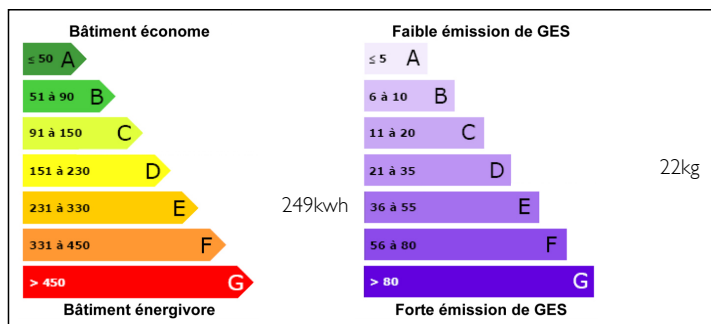
Town:	Désertines
Department:	Mayenne
Bed:	12
Bath:	11
Floor:	878 m2
Plot Size:	4312 m2

IN BRIEF

Nestled in the Mayenne countryside is this attractive converted flour mill set in its courtyard and gardens. Boasting accommodation including 10 bedrooms and 10 bathrooms along with a 2 bedroom cottage, games rooms, conference centre and luxury facilities such as a fully equipped gym and a 12m x 4m indoor pool. Solar panels, electric car charger are extra additions to this already established holiday venue. Minutes from a popular village with a bakery, and 2 bar/restaurants. an hour from the coast and less than 2 hours from the nearest ferry port. TGV to Paris is less than an hour away.



ENERGY - DPE



NB. Quoted prices relate to euro transactions. Fluctuations in exchange rates are not the responsibility of the agency or those representing it. The agency and its representatives are not authorised to make or give guarantees relating to the property. These particulars do not form part of any contract but are to be taken as a general representation of the property. Any areas, measurements or distances are approximate. Text, photographs and plans, where applicable, are for guidance only. Leggett and its representatives have not tested services, equipment or facilities and cannot guarantee the same.

Particulars for off-plan purchases are intended as a guide only. Final finishes to the property may vary. Purchasers are advised to engage a solicitor to check the plans and specifications as laid out in their purchase contract with the developer.



DESCRIPTION

This is a rare opportunity to purchase a successfully run business with its separate living accommodation in the pretty Mayenne countryside. The property is a converted flour mill and so boasts bright and spacious accommodation for guests. The mill has been separated into 2 gites but is often rented out together to large parties. This property has also had numerous venue bookings and is the ideal place to hold conferences, group get togethers or family events.

GITE 1

You enter into an entrance hall/lounge (41m²). This has wooden flooring and a window facing out onto surrounding countryside. There is a second lounge/snug (21.5m²) with 2 storage cupboards. The kitchen diner (89m²) has seating for 24 plus and is a real central hub. A fully fitted kitchen with built in oven and rayburn has plenty of storage space and the stunning marble worksurfaces are a lovely touch. From the kitchen is a door out onto a balcony that overlooks pretty views. Off the kitchen is a large utility room that has extra storage and plumbing for washing machines and dryers etc. There is a WC on this floor. On the first floor you will find a communal seating area (41m²), where guests can also relax. The 5 luxury suites (33m², 53.2m², 54m², 60.5m²) are based over 2 floors. Each room has been tastefully decorated and have their own lounge space, tv, dressing area and ensuite. High ceilings, dual aspect windows, free standing baths and showers....

LOCAL TAXES

Taxe foncière: 2942 EUR

NOTES