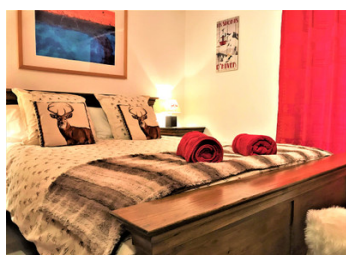
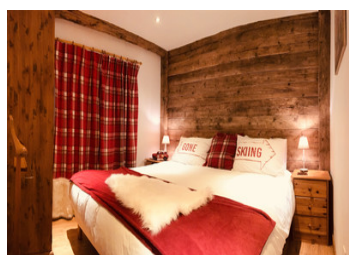
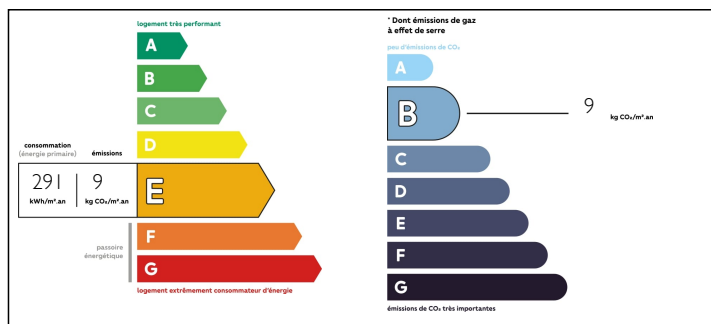


Chalet close to Sainte Foy ski resort. Kitchen, lounge, dining room, 5 bedrooms. Garage. Garden.

## EXCLUSIVE



## ENERGY - DPE



## INFORMATION

Town:	Sainte-Foy-Tarentaise
Department:	Savoie
Bed:	5
Bath:	4
Floor:	170 m2
Plot Size:	270 m2

## IN BRIEF

For sale in the village of La Thuile, Sainte Foy, a converted traditional barn renovated to a high standard built over 3 floors. Altitude 1247m. It comprises 5 recently renovated bedrooms, 4 bathrooms, kitchen, lounge, dining room, large attic for further renovation with balcony and mountain views, 2 cellars, boot room, large ski locker. Separate garage and a garden. Communal car park for 5 cars

NB. Quoted prices relate to euro transactions. Fluctuations in exchange rates are not the responsibility of the agency or those representing it. The agency and its representatives are not authorised to make or give guarantees relating to the property. These particulars do not form part of any contract but are to be taken as a general representation of the property. Any areas, measurements or distances are approximate. Text, photographs and plans, where applicable, are for guidance only. Leggett and its representatives have not tested services, equipment or facilities and cannot guarantee the same.

Particulars for off-plan purchases are intended as a guide only. Final finishes to the property may vary. Purchasers are advised to engage a solicitor to check the plans and specifications as laid out in their purchase contract with the developer.



## LOCAL TAXES

**Taxe foncière: 743 EUR**

**Taxe habitation: 415 EUR**

## NOTES

## DESCRIPTION

A fantastic opportunity to acquire a traditional Savoyard barn conversion chalet in the quiet and rustic village of La Thuile which is just 4km from the ski station of Sainte Foy, 25 minutes from Val d'Isère, 15 minutes from Tignes and 7 minutes to access Les Arcs via the village of Villaroger. You can also reach the ski station of La Rosière which is a 25 minute drive and from here you can ski over the border into Italy.

Built in 1851, this chalet is full of charm and character and is located on a quiet lane with no passing traffic and just 200m from the main arterial road that links the bustling town of Bourg Saint Maurice and the world class ski resorts of Val d'Isere and Tignes. There is a free bus service from the end of the lane which will take you to the ski resort of Sainte Foy, just 7 minutes away.

The main room dimensions are as follows :

Kitchen 18m<sup>2</sup>

Lounge 27m<sup>2</sup>

Dining Room 9m<sup>2</sup>

Bedroom 1 10m<sup>2</sup>

Bedroom 2 25m<sup>2</sup>

Bedroom 3 12m<sup>2</sup>

Bedroom 4 6m<sup>2</sup>

Bedroom 5 13m<sup>2</sup>

Boot Room and Rear Entrance 19m<sup>2</sup>

(The above does not include bathrooms / hallways / WC's)

2nd Floor Attic Room to be renovated 128m<sup>2</sup>

Enter through the front door and into the well-equipped kitchen featuring fitted units, work surface, traditional ceramic twin sink units, built in electric oven, gas hob, extractor fan, a dishwasher and a large American style fridge freezer. Head through the useful storage room and into the...